



UNIVERSAL Orlando

5800 UNIVERSAL BLVD | ORLANDO, FL 32819
PHONE: (407) 503-2000 | FAX: (407) 503-2010

SALES OFFICE

1000 UNIVERSAL STUDIOS PLAZA | ORLANDO, FL 32819
PHONE: (407) 224-6229 | 1-877-823-2042

FAX: (407) 224- 5311

MEETINGS@UNIVERSALORLANDO.COM

WWW.UOMEETINGSANDEVENTS.COM



MEETINGS & EVENTS



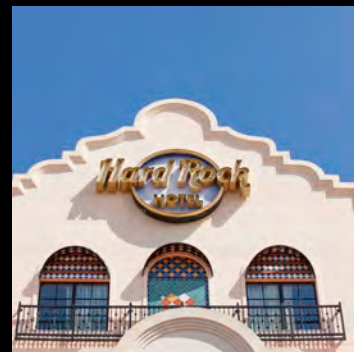
LOEWS
HOTELS • RESORTS



UNIVERSAL Orlando

HARRY POTTER, characters, names and related indicia are trademarks of and © Warner Bros. Entertainment Inc. Harry Potter Publishing Rights © JKR.
(s13)

*Paid theme park admission required. Not valid at Harry Potter and the Forbidden Journey™ and other select attractions. On-site hotel privileges good for hotel stay as indicated on the Universal Express™ Unlimited pass. Only valid for the number of guests staying in the room. Ride access available during normal theme park operating hours only. Not valid for separately ticketed special events. Additional restrictions may apply and benefits are subject to change without notice. **Based on seasonal peak pricing for the Universal Express™ Unlimited pass. **Paid theme park admission required. Early Park Admission begins one (1) hour prior to Universal's Islands of Adventure regular scheduled park opening for on-site hotel guests and is valid 7 days a week for travel through 12/31/14, valid only at select Islands of Adventure attractions: Harry Potter and the Forbidden Journey™, Flight of the Hippogriff™, Dragon Challenge™ and Caro-Seuss-el™. Attractions may vary. †Only one rollaway is allowed per room. King Rooms have bedding for 2, requires rollaway for 3. Two Queens have bedding for 4, requires rollaway for 5. Available on a first come, first served basis.
Hard Rock Café © Hard Rock Café International (USA), Inc. Universal elements and all related indicia TM & © 2013 Universal Studios. © 2013 Universal Orlando. All rights reserved. 238180/0513/TW



LIVE LIKE A ROCK 'N' ROLL SUPERSTAR

It's the perfect mix of funk and just plain fun – the exciting Hard Rock Hotel® at Universal Orlando®.

Catch some rays by the sparkling pool, or take a dip and immerse yourself in the underwater music. Check out over a million dollars' worth of rare rock memorabilia throughout the hotel, from a Jimi Hendrix guitar to an Elvis jumpsuit. Grab a world-class steak at the legendary Palm Restaurant, or sample the inventive New American cuisine of The Kitchen.

Plus, after a full day of meetings your attendees can escape to Universal Studios Florida® and Universal's Islands of Adventure® theme parks. Both theme parks and the Universal CityWalk® entertainment complex are just steps away from Hard Rock Hotel®. Best of all, when staying at one of our deluxe on-site hotels your attendees will enjoy exclusive theme park benefits, including:

- Universal ExpressSM Unlimited* ride access to SKIP THE REGULAR LINES in both theme parks – a FREE benefit worth up to \$89 per person, per day** (valid theme park admission required)
- Early Park Admission^ to The Wizarding World of Harry Potter™, one hour before the theme park opens (valid theme park admission required)
- And much more!

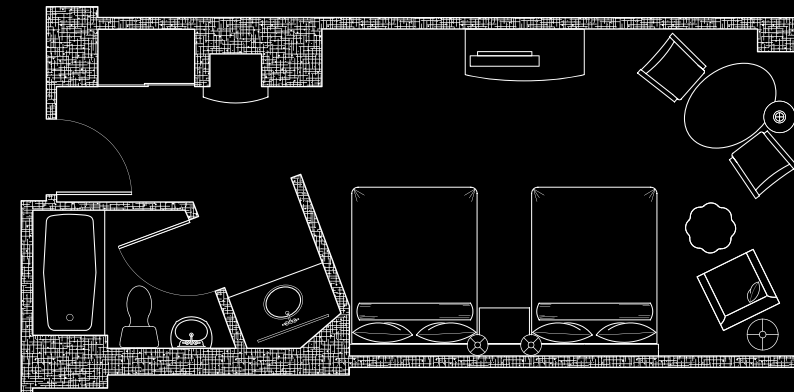
You don't have to be a rock star to stay at Hard Rock Hotel®...but in no time at all you'll get used to living the lifestyle.



GARDEN / POOL VIEW ROOM

AMENITIES

- 32" flat panel television with HD channels and On Demand® in-room movies (fees apply)
- iHome clock radio and docking station
- Keurig coffee maker featuring coffee and assorted teas
- Minibar (fees apply)
- Cotton signature bathrobes
- Nightly turndown service (upon request)
- Iron, ironing board, hairdryer and in-room safe
- In-room wireless high-speed internet access (Fees apply. Complimentary access in public areas)
- Club Level rooms feature complimentary continental breakfast, access to the fitness center, and more



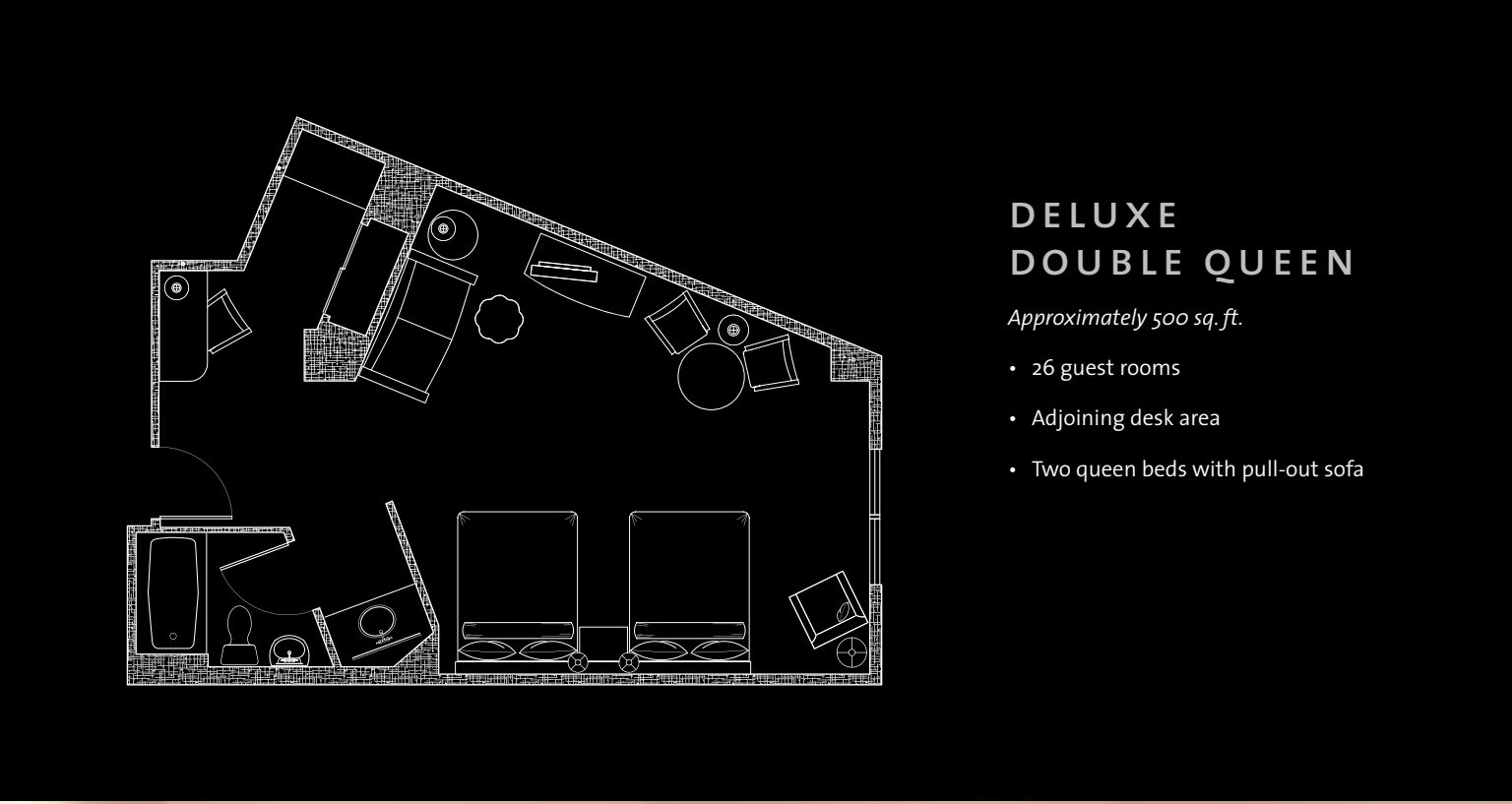
GARDEN / POOL VIEW ROOMS

Approximately 375 sq. ft.

- 489 guest rooms
- Garden or Pool view
- Two queen beds
- Rooms can accommodate up to 5⁺ with a rollaway for an additional charge



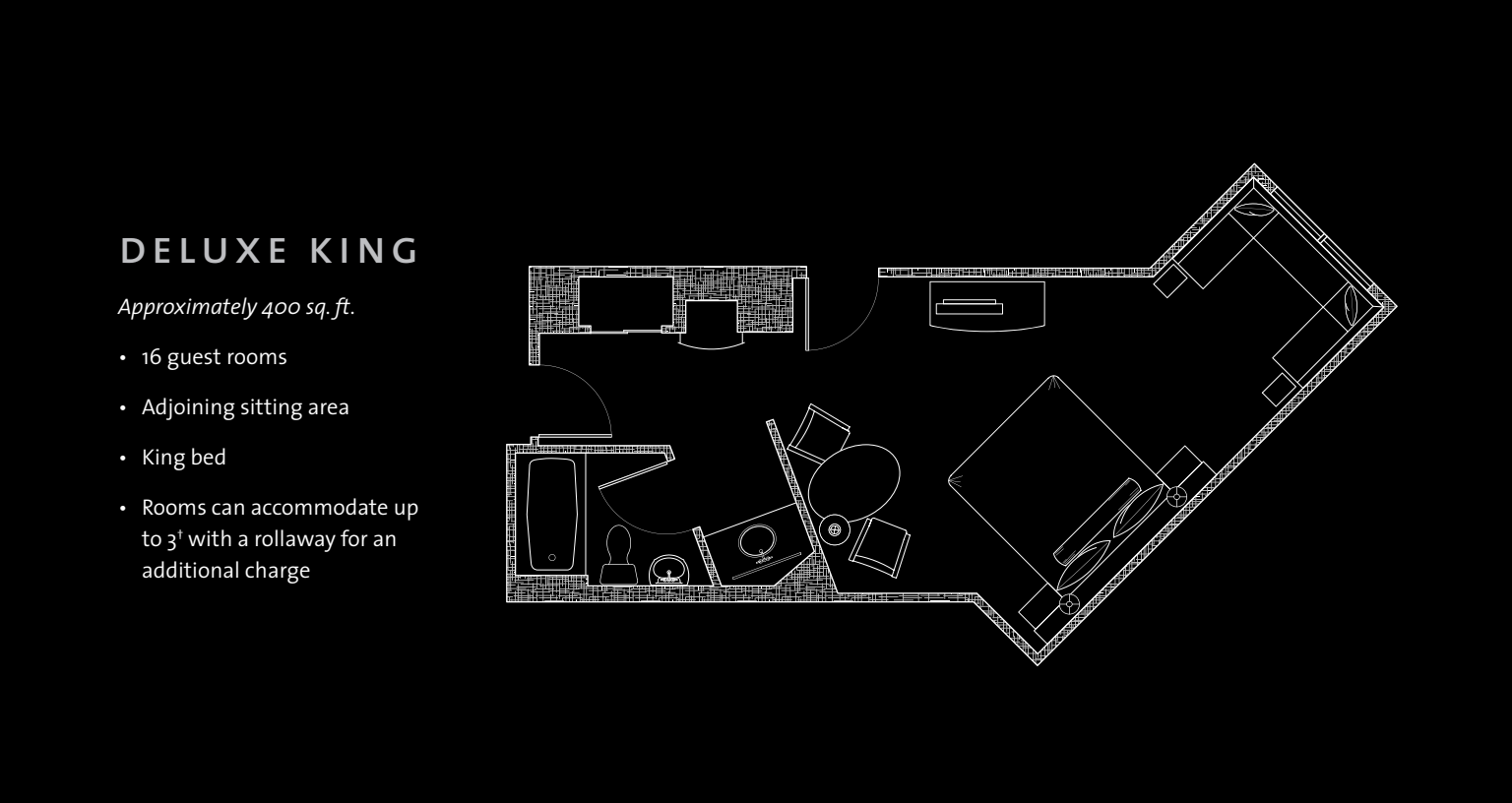
DELUXE KING



DELUXE DOUBLE QUEEN

Approximately 500 sq. ft.

- 26 guest rooms
- Adjoining desk area
- Two queen beds with pull-out sofa



DELUXE KING

Approximately 400 sq. ft.

- 16 guest rooms
- Adjoining sitting area
- King bed
- Rooms can accommodate up to 3⁺ with a rollaway for an additional charge



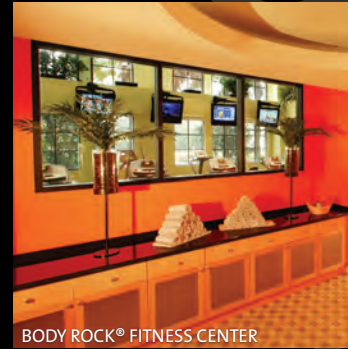
DELUXE DOUBLE QUEEN



CLUB 7 LOUNGE



ROCK 'N ROLL MEMORABILIA



BODY ROCK® FITNESS CENTER

HARD ROCK CLUB LEVEL

Club Level includes 95 rooms and suites. Upgrade to a Club Level room and enjoy:

- Reduced prices on cabanas, evening turndown service and cotton signature bathrobes
- Keyed access to exclusive "Club 7," our 1,500 sq. ft. lounge located on the seventh floor
- Personal concierge service
- Rock 'n' roll book and music library
- Complimentary continental breakfast and evening hors d'oeuvres with beer & wine
- Access to body rock® fitness center



CLUB 7 LOUNGE



KIDS SUITE



KING SUITE



HOSPITALITY SUITE



GRACELAND SUITE

LUXURY SUITES

The Hard Rock Hotel® offers an array of suites combining the finest in ultra-sophistication with the ultimate in ultra-cool. No matter which type of suite you choose, you'll find plenty of room, iHome clock radios and an array of modern amenities, and style to spare.

King Suites give guests enough room for the entire entourage to relax and unwind with a king size bed and pull-out sofa.

Whether it's for important business or an after-show get-together, the hotel's Hospitality Suites offer the perfect gathering space. Features include a dining room table, oversized wet-bar with service pantry, and an office area just right for closing that next big recording deal.

The biggest megastars (or those who want to feel like one) will feel right at home in the impressive Graceland Suite. The hotel's premier suite offers upgraded room amenities including a baby grand piano and 65" flat panel TV in the living area, a glass-encased double-sided fireplace in the master bedroom shared with the bathroom, expansive marble shower, whirlpool tub overlooking the pool and more.

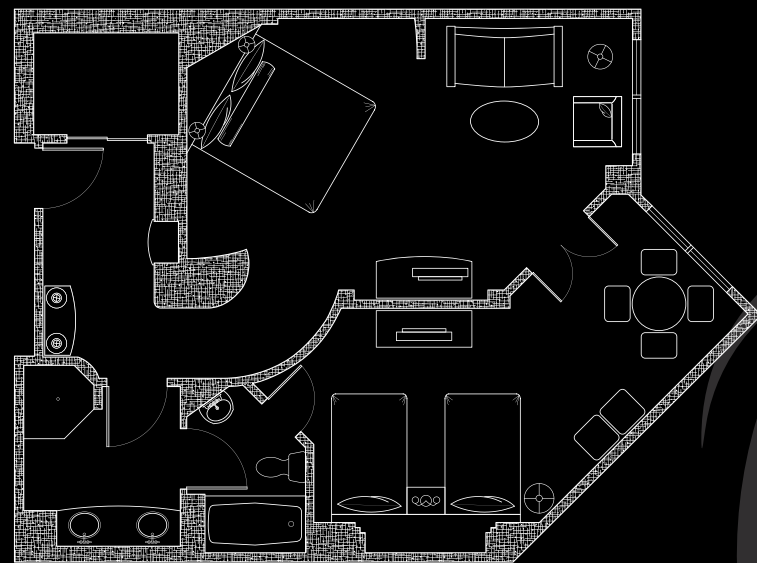
A stay at the Hard Rock Hotel is sure to make anyone feel like an "A-List" celebrity.

KIDS SUITES

Approximately 800 sq. ft.

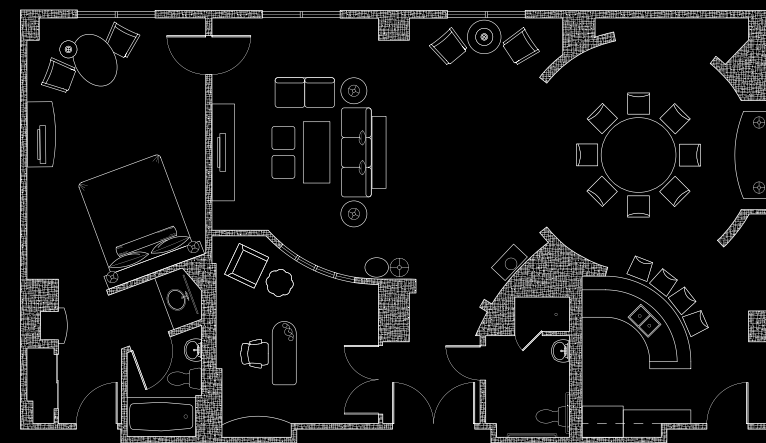
- 12 suites / 2 club level (additional charge)
- Separate bedroom and entertainment area for adults and children; kid's room features TV and child-sized table and chairs
- King bed and two twin beds

Floor plans may vary.





KING SUITE



HOSPITALITY SUITES

Approximately 1,625 total sq. ft.
(Parlor is 1,250 sq. ft.)

- 2 suites
- Entertainment parlor with dining room table, oversized wet-bar with service pantry, plus an enclosed office area
- Parlor connects to Garden View room with King bed
- Rooms can accommodate up to 3rd with a rollaway for an additional charge

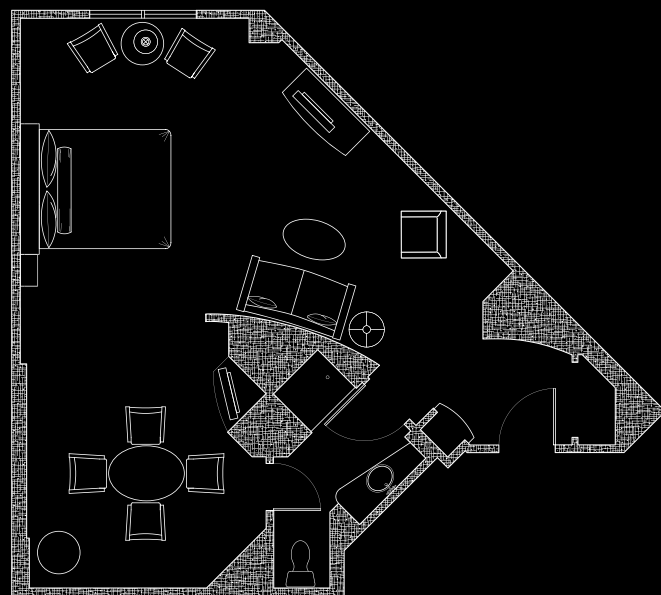
Floor plans may vary.

KING SUITES

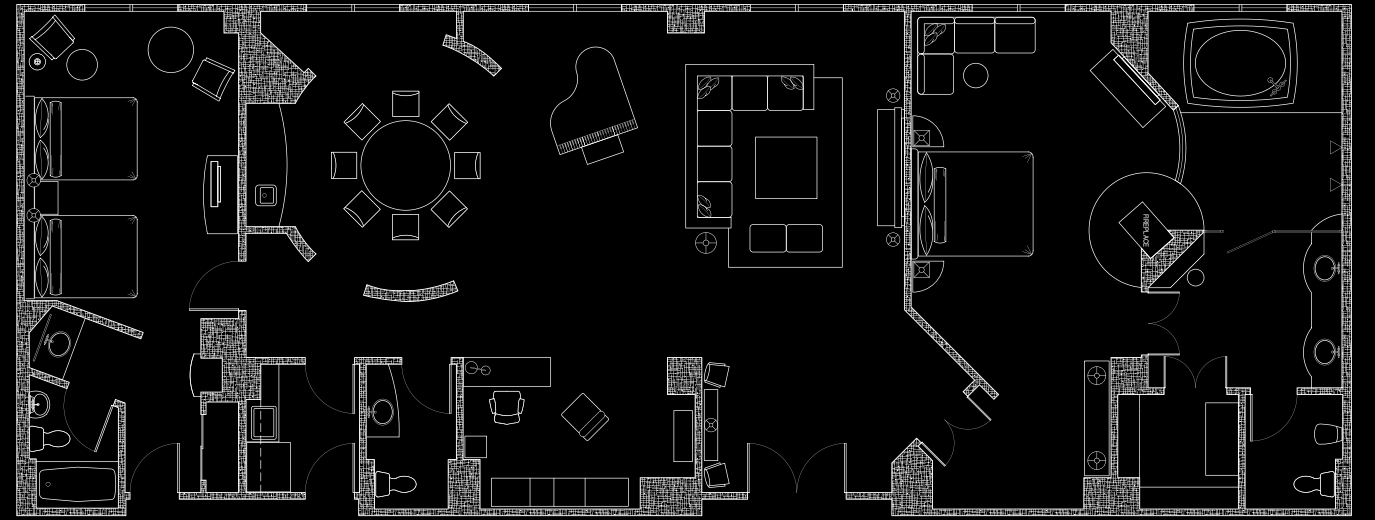
Approximately 650 sq. ft.

- 10 suites / 2 club level (additional charge)
- Entertainment parlor with dining room table
- King bed
- Pull-out sofa
- Optional second connecting room

Floor plans may vary.



HOSPITALITY SUITE



GRACELAND SUITE

*Two Bedroom Suite Configuration
Approximately 2,375 total sq. ft.*

- Access to Club 7 Lounge
- Baby Grand Piano
- 65" flat panel TV in the living area
- 42" flat panel TV in the master bedroom
- Glass-encased, double-sided fireplace in master bedroom shared with bathroom
- Whirlpool tub overlooking the pool and theme park
- Expansive marble shower
- Walk-in closet
- King bed with leather headboard
- Pool View room (shown in diagram)
- Complimentary cabana at the pool